



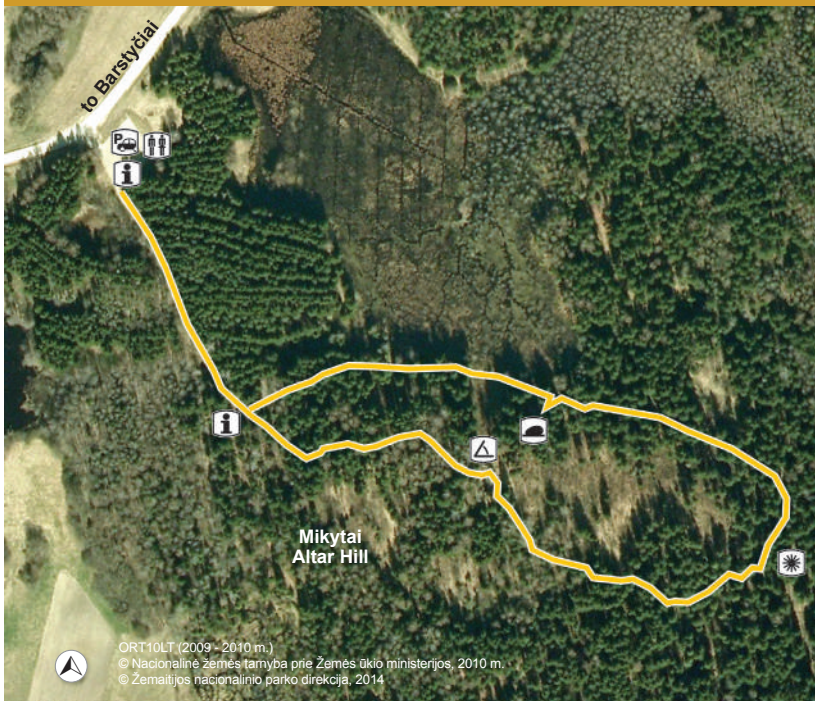
Part-financed by the European Union (European Regional Development Fund)

# MIKYTAI EDUCATIONAL WALKING TRAIL

ŽEMAITIJA NATIONAL PARK LANDSCAPE



## SCHEME OF WALKING TRAIL



ORT10LT (2009 - 2010 m.)  
© Nacionalinė žemės tarnyba prie Žemės ūkio ministerijos, 2010 m.  
© Žemaitijos nacionalinio parko direkcija, 2014

### Legend

Parking Lot

Toilet

Information

Viewing Platform

Well of Prayers

Mythological Stone

Walking Trail



### EXCLUSIVENESS OF TRAIL EXPERIENCE:

- Mikytai Altar Hill.** The height of the 1st millennium middle - 2nd millennium beginning Mikytai altar hill is 30 metres. According to legends, the Mikytai altar hill was erected by the Swedes; while in ancient times this was a place, where sacrifices used to be offered to gods.
- Stone with a Devil's Footprint.** A bumpy mythological stone of 4.5x2.5x4 m in size: "a foot with the heel". According to the legend, a devil destroyed the church that stood on the altar hill and pressed its foot into a stone when scurrying away. It is thought that this stone's age is not less than 1,5 billion years, and even much more.
- Well of Prayers (Offerings).** It is a funnel type pit about 2 m in diameter and up to 50 cm in depth, cobbled with small stones. According to the legend, sacrifices used to be offered here. Later, in order to save the sacrifices, this well was hidden under the stones.
- Mikytai Landscape Reserve.** The reserve has been established to preserve and show to the visitors this mosaic hilly landscape characteristic of Žemaitija, featuring the entire complex of woods, fields, meadows, hills interspersed with small swamps and single farmsteads, archaeological finds, rare vegetation, habitats of rare species of plants, fungi and animals and natural hydrographic elements. One of the hills, Pūkštė Hill, has been granted a status of a natural monument.



Respect, protect and preserve the Žemaitija National Park so that the natural and cultural valuables existing on its soil would remain for future generations.

# MIKYTAI

## EDUCATIONAL WALKING TRAIL

ŽEMAITIJA NATIONAL PARK LANDSCAPE



© Nacionalinė žemės tarnyba prie Žemės ūkio ministerijos, 2013. © maps.lt, 2014. © Žemaitijos nacionalinio parko direkcija, 2014



### PLATELIAI - MIKYTAI EDUCATIONAL WALKING TRAIL

A walking trail of 1 km long is located in the northern part of the Žemaitija National Park, 11 km from the Žemaitija National Park Administration Plateliai Visitor Centre. The coordinates of the starting point of the trail: 364875, 6223471 (LKS) or 56.125956, 21.826587 (WGS). The trail of natural paving has way finding signs, and there is a National Park Information Board at the starting point.

Near the trail, there is a resting place, a parking lot and a toilet. The closest eatery is in Barstyčiai, 5,3 km away, while eating and lodging facilities are in Plateliai, 11 km away.

Author Žemaitija National Park Administration. Photos: S. Sidabras, G. Sidabriėnė, D. Abrutė, A. Brazdeikytė, S. Vyšniauskas. Translation UAB „Tarptautinių vertimų biuras“. Layout&design UAB „INDIGO print“.

This publication reflects the Žemaitija National Park Administration's approach, hence the EU European Commission and the Managing Authority shall not be responsible for any use of this information.

© Žemaitija National Park Administration, 2014

This publication has been printed on 100% recycled paper in compliance with environmental requirements for eco-friendly printing.

This walking trail (1 km) provides the hikers with opportunities to explore the Mikytai Landscape Reserve and some valuable state-protected archaeological finds.



### Žemaitija National Park Administration Plateliai Visitor Centre

Didžioji g. 8, Plateliai, LT-90420, Plungės r., tel.: +370 448 49231, +370 677 86758  
E-mail [info@zemaitijosnp.lt](mailto:info@zemaitijosnp.lt), website [www.zemaitijosnp.lt](http://www.zemaitijosnp.lt)

Žemaitija National Park (ŽNP) was established in 1991 to preserve, manage and use the areas of the Žemaitija region most valuable from the natural and cultural point of view. The ŽNP has been designated as a NATURA 2000 site, it is a member of EDEN (European Destinations of Excellence) network and a member of the European Charter for Sustainable Tourism in Protected Areas.